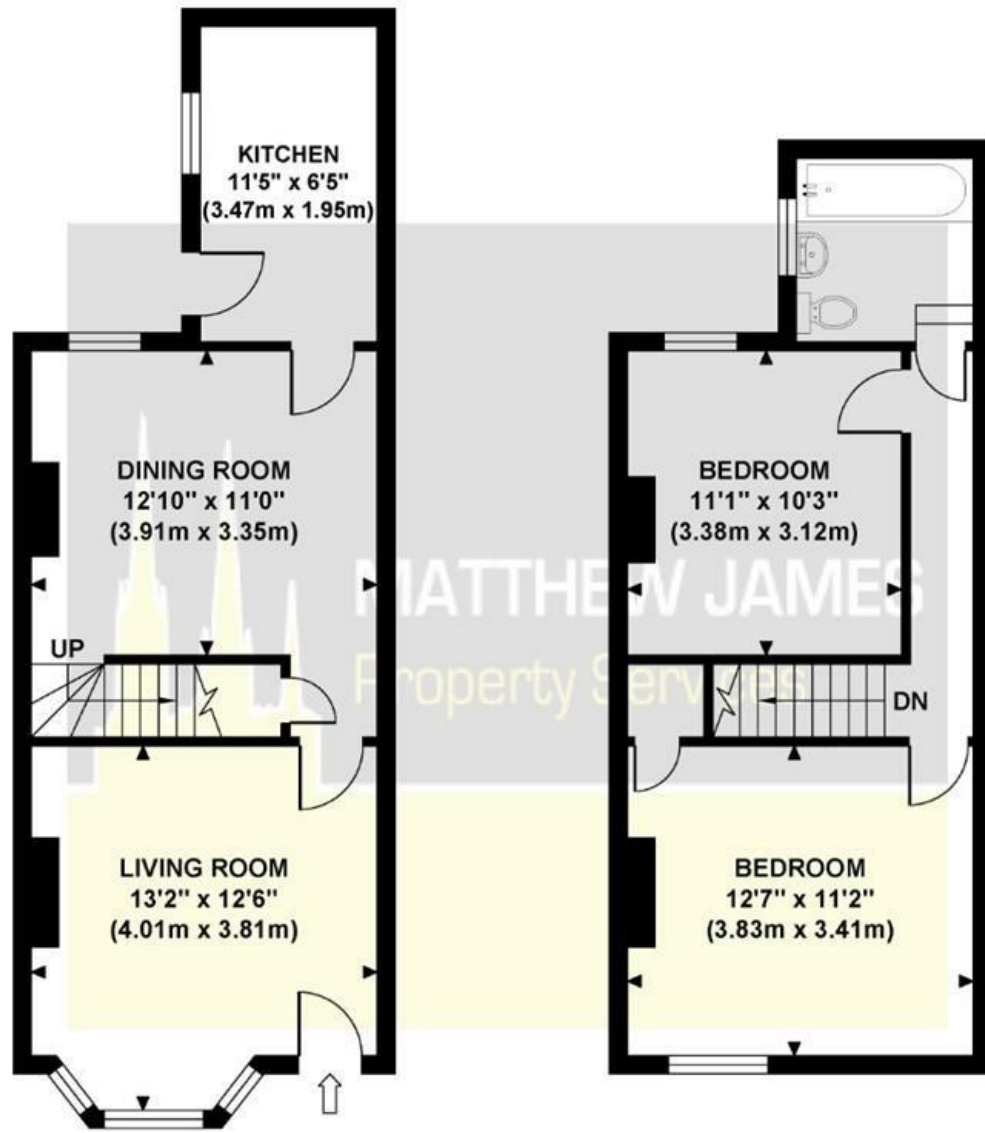


# BURLINGTON ROAD

Approximate Gross Internal Area 767 sq ft / 71.30 sq m

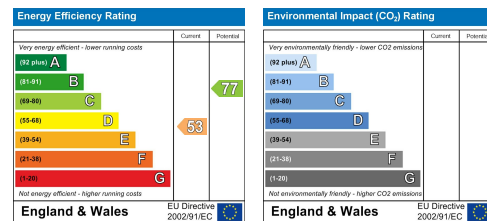


**GROUND FLOOR**  
GROSS INTERNAL  
FLOOR AREA 405 SQ FT

**FIRST FLOOR**  
GROSS INTERNAL  
FLOOR AREA 362 SQ FT

Although every attempt has been made to ensure accuracy, all measurements are approximate and no responsibility is taken for any error, omission, or mid-statement. This floor plan is for illustrative purposes only and not to scale. Measured in accordance to RICS standards.

These particulars, whilst believed to be accurate are set out as a general outline only for guidance and do not constitute any part of an offer or contract. Intending purchasers should not rely on them as statements of representation of fact, but must satisfy themselves by inspection or otherwise as to their accuracy. No person in this firm's employment has the authority to make or give any representation or warranty in respect of the property.



## 90 Burlington Road Stoke, Coventry CV2 4QF

**\*\*CHECK OUT THE VIRTUAL TOUR\*\* BEAUTIFUL THROUGHOUT... TWO DOUBLE BEDROOMS... TWO RECEPTION ROOMS... END OF TERRACE... PERFECT FOR THE FIRST TIME BUYER OR THE INVESTMENT PURCHASE... PVCU DOUBLE GLAZED & GAS CENTRAL HEATING... FIRST FLOOR FAMILY BATHROOM.** Located in Stoke, this beautiful end of terrace two double bedroom property needs to be viewed to appreciate exactly what is being offered for sale. Briefly comprising of two reception rooms, modern kitchen, two double bedrooms, first floor family bathroom, PVCu double glazing and gas central heating throughout. Close to local shops, doctors surgery, Stoke Heath Park, Schools and main bus routes into Coventry City Centre. Call us now to book your immediate viewing.

**£150,000**

### CONTACT INFORMATION

24a Warwick Row, Coventry CV1 1EY

02477 170170

info@matthewjames.uk.com

www.matthewjames.uk.com

Facebook

Twitter

# 90 Burlington Road

Stoke, Coventry CV2 4QF



- Two Double Bedrooms
- End Of Terrace
- Beautiful Condition Throughout
- Great For Investment!
- Two Reception Rooms
- PVCu Double Glazing
- Close To Shops & Schools
- First Floor Bathroom
- Gas Central Heating
- Perfect For First Time Buyer

## Front Garden

### Living Room

13'2 x 12'6 (4.01m x 3.81m)

### Dining Room

12'10 x 11' (3.91m x 3.35m)

### Kitchen

11'5 x 6' (3.48m x 1.83m)

## First Floor Landing

### Bedroom One

12'7 x 11'2 (3.84m x 3.40m)

### Bedroom Two

11'1 x 10'3 (3.38m x 3.12m)

### Family Bathroom

6'5 x 6'4 (1.96m x 1.93m)

## Rear Garden



## Directions

